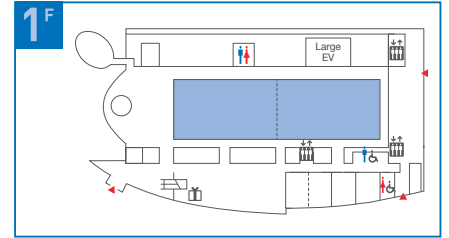
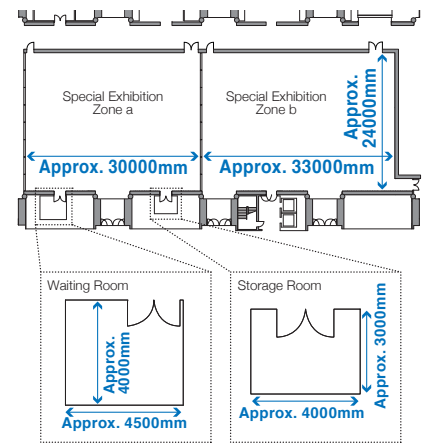


# Special Exhibition Zone a·b

These spaces can be used as venue for large-scale events, special exhibitions, or parties. Special Exhibition Zone a and b can be combined into one large space. Special Exhibition Zone b is permanently equipped with a lifting type screen that is approximately 900-inch, so that it can be used for screenings and other visual aids.



Floor Plan



## Specifications

### Special Exhibition Zone a

Floor space	Ceiling height	Buffet-style	Banquet style	Classroom style
720m <sup>2</sup>	6-8m	600 people	400 seats	430 seats
Theatre-style	Fly system	Attached room		
860 seats	Fixed 12 Battens	2 rooms (18m <sup>2</sup> /12m <sup>2</sup> )		

### Special Exhibition Zone b

Floor space	Ceiling height	Buffet-style	Banquet style	Classroom style
790m <sup>2</sup>	6-8m	650 people	450 seats	448 seats
Theatre-style	Screen	Fly system		
960 seats	900 inches	Fixed 9 Battens Lifting 4 Battens		

## Usage note

There are separate assessment items for using the Special Exhibition Zone a and b in addition to the normal usage assessment standards.

Please submit an event outline document including the content and scale of the event, your company profile and the layout plan for the space. We will review the event outline document and grant approval based on it.

This space is often used for events and the days available are limited. Ask our staff for detailed information.